

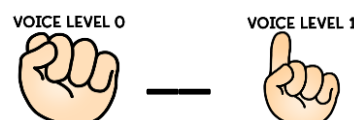


# BUTLER BEARS ARE...

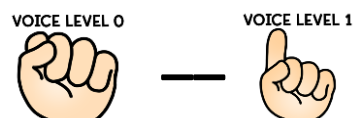


## VOICE LEVEL

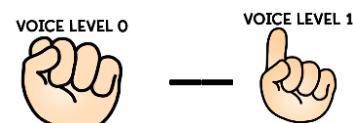
### ARRIVAL/ DISMISSAL



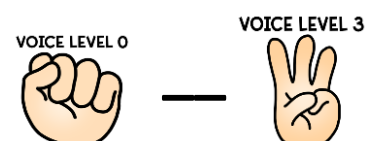
### TECHNOLOGY



### HALLWAY



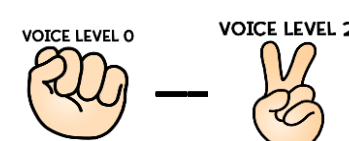
### CLASSROOM



### RECESS



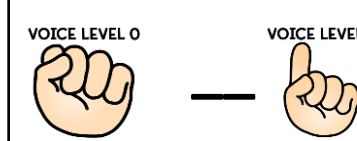
### CAFETERIA



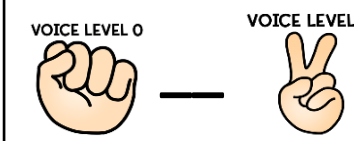
### BUS



### BATHROOM



### SPECIAL EVENTS & ASSEMBLIES



## RESPECTFUL WHEN...

I greet others.



I am gentle and take care of my technology.



I enjoy hallway displays with my eyes only.



I follow directions. I listen to the teacher the first time. I am responsible for my actions.



I listen the first time to ALL adults. I am silent when walking back to class.



I am patient and use my manners. I listen to all adults and follow directions.



I use my inside voice. I listen to the driver.



I stay focused on myself and wait my turn patiently and quietly.



I am silent when an adult is speaking. I follow directions the first time.

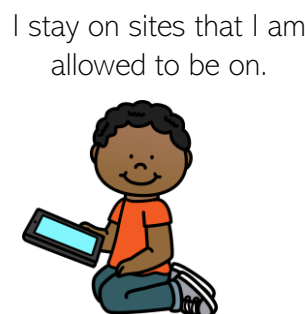


## RESPONSIBLE WHEN...

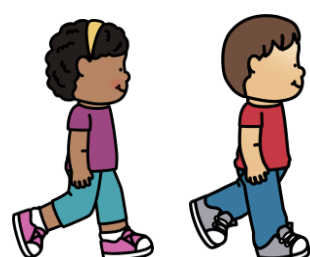
I walk quickly and quietly to my classroom.



I only use educational websites, apps, and digital tools.



I always walk and keep my hands and feet to myself.



I keep my desk clean. I pay attention and do my best work. I raise my hand when needed.



I use recess equipment correctly. I report unsafe actions to the adults.



I clean up after I am done eating. I place my trash in the appropriate can. I am silent when walking back to class.



I sit correctly and keep all electronics and food in my bag. I enter and leave the bus patiently.



I only flush the toilet when I am finished. I keep my feet on the floor and keep all doors unlocked when I am finished.



I sit on my bottom. I look to my teacher for directions.



## KIND WHEN...

I am patient when I am walking.

I keep my personal space when moving in the hallway.



I use technology appropriately.



I smile when I pass others. I help others if needed.



I treat others the way I wish to be treated.



I include others when I play and am fair. I help others when needed. I practice good sportsmanship.



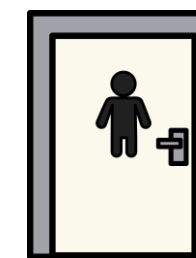
I am a good role model when I make good choices.



I help friends when needed. I use appropriate language.



I honor the privacy of others and use appropriate language.



I move for adults who may need to pass.

I help others when needed.

